

# Davis - 7th Grade Science Agenda

Week of January 16, 2017

Day	In Class/Learning Targets	HW/Reminders
<b>Monday 1-16</b>	<b>No School MLK DAY</b>	
<p style="text-align: center;"><b>Tuesday 1-17</b></p> <p><i>I can understand that all organisms are made of cells.</i></p>	<p style="text-align: center;"><b>See All Classes</b></p> <ol style="list-style-type: none"> <li>1. Review Microscope Parts</li> <li>2. Read Textbook pg. 16-24</li> <li>3. Cell Organelle Vocab in notebook</li> </ol>	Microscope Quiz Friday
<p style="text-align: center;"><b>Wednesday 1-18</b></p> <p><i>I can understand the difference between plant and animal cells.</i></p> <p><i>I can correctly use a microscope for investigations.</i></p>	<p style="text-align: center;"><b>Block Schedule-Odd Day (3,5)</b></p> <ol style="list-style-type: none"> <li>1. Review Wet Mount Slides</li> <li>2. <u>Seeing Cells Lab</u> -green plant cell -onion skin cell -human cheek cell</li> </ol>	Microscope Quiz Friday  Finish Lab Questions
<b>Thursday 1-19</b>	<b>Block Schedule-Even Day (2, 4)</b>  See Wednesday	
<b>Friday 1-20</b>	<p style="text-align: center;"><b>See All Classes-Early Release</b></p> <p style="text-align: center;">Check: Seeing Cells Lab</p> <ol style="list-style-type: none"> <li>1. Microscope Quiz</li> </ol>	

Read 16-18

Finish reading 18-24

Study

Turn Over for Standards covered this unit.

# Looking Inside Cells

## Reading Preview

### Key Concepts

- What role do the cell wall and cell membrane play in the cell?
- What are the functions of cell organelles?
- How are cells organized in many-celled organisms?
- How do bacterial cells differ from plant and animal cells?

### Key Terms

- organelle • cell wall
- cell membrane • nucleus
- cytoplasm • mitochondria
- endoplasmic reticulum
- ribosome • Golgi body
- chloroplast • vacuole
- lysosome

## Target Reading Skill

**Previewing Visuals** Before you read, preview Figure 12. Then write two questions that you have about the illustrations in a graphic organizer like the one below. As you read, answer your questions.

### Plant and Animal Cells

Q. How are animal cells different from plant cells?

A.

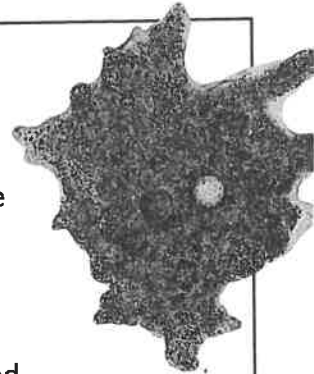
Q.

Lab  
zone

## Discover Activity

### How Large Are Cells?

1. Look at the organism in the photo. The organism is an amoeba (uh MEE buh), a large single-celled organism. This type of amoeba is about 1 mm long.
2. Multiply your height in meters by 1,000 to get your height in millimeters. How many amoebas would you have to stack end-to-end to equal your height?
3. Many of the cells in your body are about 0.01 mm long—one hundredth the size of an amoeba. How many body cells would you have to stack end-to-end to equal your height?



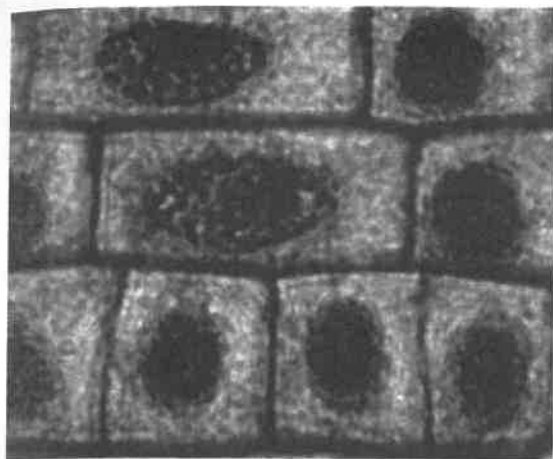
### Think It Over

**Inferring** Look at a metric ruler to see how small 1 mm is. Now imagine a distance one one-hundredth as long, or 0.01 mm. Why can't you see your body's cells without the aid of a microscope?

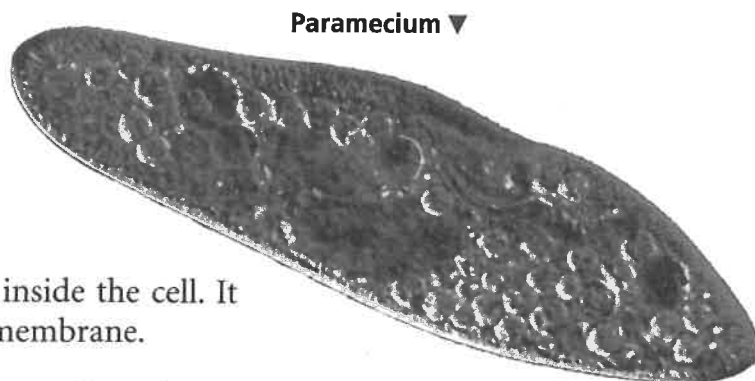
Nasturtiums brighten up many gardens with green leaves and colorful flowers. How do nasturtiums carry out all the functions necessary to stay alive? To answer this question, you are about to take an imaginary journey. You will travel inside a nasturtium leaf, visiting its tiny cells. You will observe some of the structures found in plant cells. You will also learn some differences between plant and animal cells.

As you will discover on your journey, there are even smaller structures inside a cell. These tiny cell structures, called **organelles**, carry out specific functions within the cell. Just as your stomach, lungs, and heart have different functions in your body, each organelle has a different function within the cell. Now it's time to hop aboard your imaginary ship and sail into a typical plant cell.

Nasturtiums ►



◀ Onion root cells



Paramecium ▼

## Enter the Cell

Your ship doesn't have an easy time getting inside the cell. It has to pass through the cell wall and the cell membrane.

**Cell Wall** As you travel through the plant cell, refer to Figure 12. First, you must slip through the cell wall. The **cell wall** is a rigid layer of nonliving material that surrounds the cells of plants and some other organisms. The cells of animals, in contrast, do not have cell walls. **A plant's cell wall helps to protect and support the cell.** The cell wall is made mostly of a strong material called cellulose. Although the cell wall is tough, many materials, including water and oxygen, can pass through easily.

**Cell Membrane** After you sail through the cell wall, the next barrier you must cross is the **cell membrane**. All cells have cell membranes. In cells with cell walls, the cell membrane is located just inside the cell wall. In other cells, the cell membrane forms the outside boundary that separates the cell from its environment.

**The cell membrane controls what substances come into and out of a cell.** Everything the cell needs, from food to oxygen, enters the cell through the cell membrane. Fortunately, your ship can slip through, too. Harmful waste products leave the cell through the cell membrane. For a cell to survive, the cell membrane must allow these materials to pass in and out. In addition, the cell membrane prevents harmful materials from entering the cell. In a sense, the cell membrane is like a window screen. The screen allows air to enter and leave a room, but it keeps insects out.

FIGURE 8

### Cell Wall and Cell Membrane

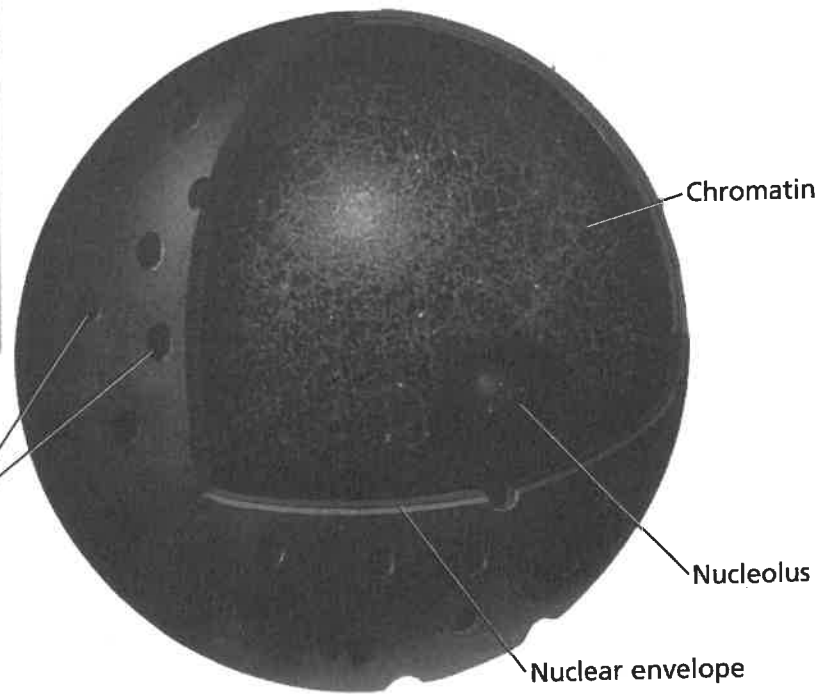
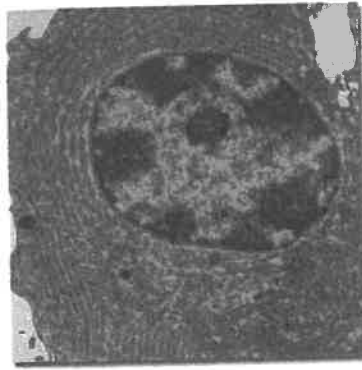
The onion root cells have both a cell wall and a cell membrane. The single-celled paramecium has only a cell membrane.

**Interpreting Photographs** *What shape do the cell walls give to the onion root cells?*



Reading  
Checkpoint

What is the function of the cell wall?



**FIGURE 9**

**The Nucleus**

The photo (left) and diagram (right) both show the nucleus, which is the cell's control center. The chromatin in the nucleus contains instructions for carrying out the cell's activities.

**Lab zone**

**Try This Activity**

**Gelatin Cell**

Make your own model of a cell.

1. Dissolve a packet of colorless gelatin in warm water. Pour the gelatin into a rectangular pan (for a plant cell) or a round pan (for an animal cell).
2. Choose different materials that resemble each of the cell structures found in the cell you are modeling. Insert these materials into the gelatin before it begins to solidify.

**Making Models** On a sheet of paper, develop a key that identifies each cell structure in your model. Describe the function of each structure.

**Sail on to the Nucleus**

As you sail inside the cell, a large, oval structure comes into view. This structure, called the **nucleus** (NOO klee us), acts as the "brain" of the cell. You can think of the nucleus as the cell's control center, directing all of the cell's activities.

**Nuclear Envelope** Notice in Figure 9 that the nucleus is surrounded by a membrane called the nuclear envelope. Just as a mailing envelope protects the letter inside it, the nuclear envelope protects the nucleus. Materials pass in and out of the nucleus through pores in the nuclear envelope. So aim for that pore just ahead and carefully glide into the nucleus.

**Chromatin** You might wonder how the nucleus "knows" how to direct the cell. The answer lies in those thin strands floating directly ahead in the nucleus. These strands, called chromatin, contain genetic material, the instructions for directing the cell's functions. For example, the instructions in the chromatin ensure that leaf cells grow and divide to form more leaf cells.

**Nucleolus** As you prepare to leave the nucleus, you spot a small object floating by. This structure, a nucleolus, is where ribosomes are made. Ribosomes are the organelles where proteins are produced. Proteins are important chemicals in cells.



**Reading Checkpoint**

Where in the nucleus is genetic material found?

FIGURE 10

### Mitochondrion

The mitochondria produce most of the cell's energy. **Inferring** In what types of cells would you expect to find a lot of mitochondria?

## Organelles in the Cytoplasm

As you leave the nucleus, you find yourself in the **cytoplasm**, the region between the cell membrane and the nucleus. Your ship floats in a clear, thick, gel-like fluid. The fluid in the cytoplasm is constantly moving, so your ship does not need to propel itself. Many cell organelles are found in the cytoplasm.

**Mitochondria** Suddenly, rod-shaped structures loom ahead. These organelles are **mitochondria** (my tuh KAHN dree uh) (singular *mitochondrion*). **Mitochondria are known as the "powerhouses" of the cell because they convert energy in food molecules to energy the cell can use to carry out its functions.** Figure 10 shows a mitochondrion up close.

**Endoplasmic Reticulum** As you sail farther into the cytoplasm, you find yourself in a maze of passageways called the **endoplasmic reticulum** (en duh PLAZ mik rih TIK yuh lum). **The endoplasmic reticulum's passageways carry proteins and other materials from one part of the cell to another.**

**Ribosomes** Attached to some surfaces of the endoplasmic reticulum are small, grainlike bodies called **ribosomes**. Other ribosomes float in the cytoplasm. **Ribosomes function as factories to produce proteins.** Some newly made proteins are released through the wall of the endoplasmic reticulum. From the interior of the endoplasmic reticulum, the proteins will be transported to the Golgi bodies.

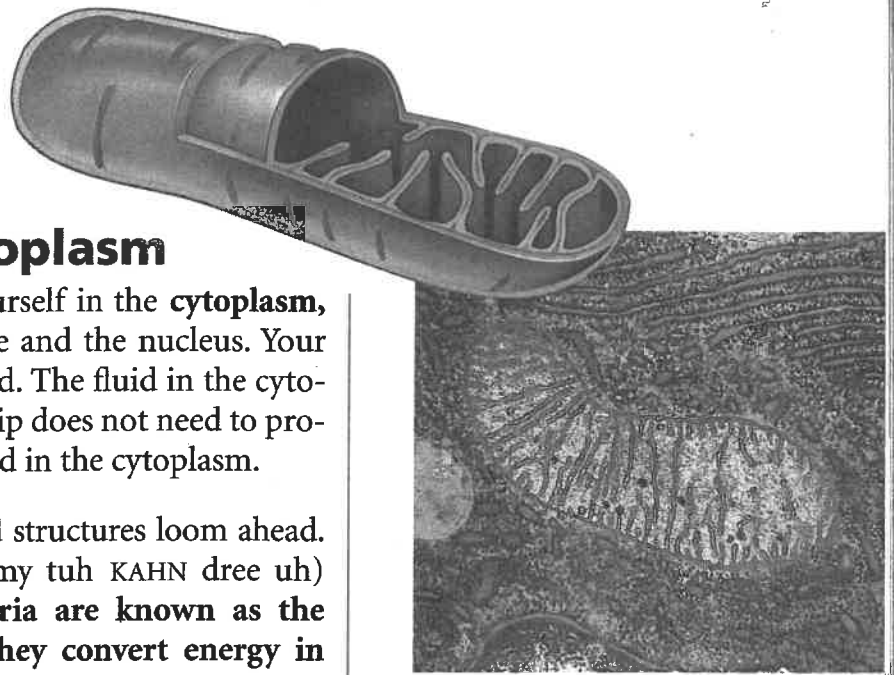


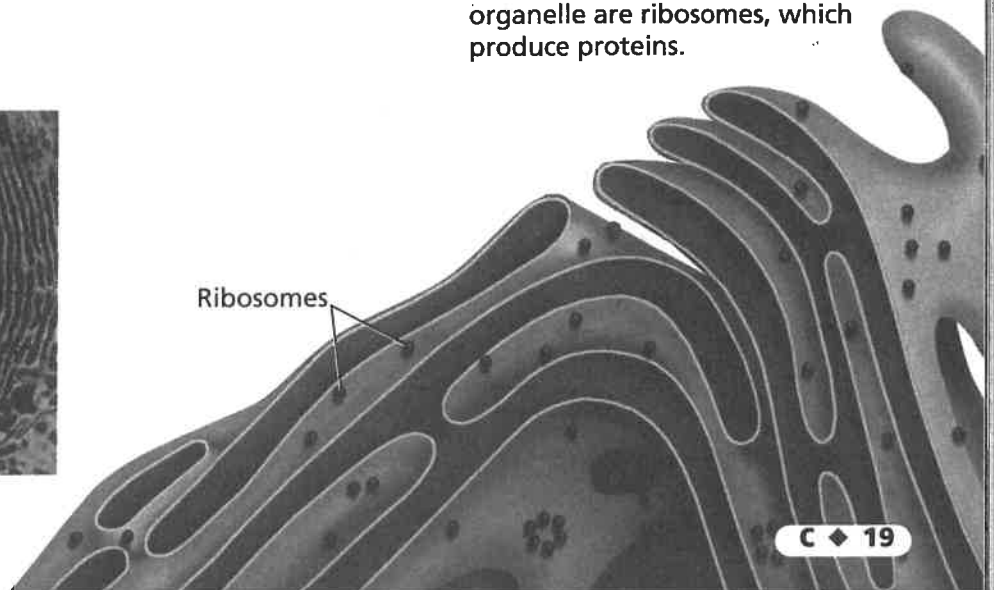
FIGURE 11

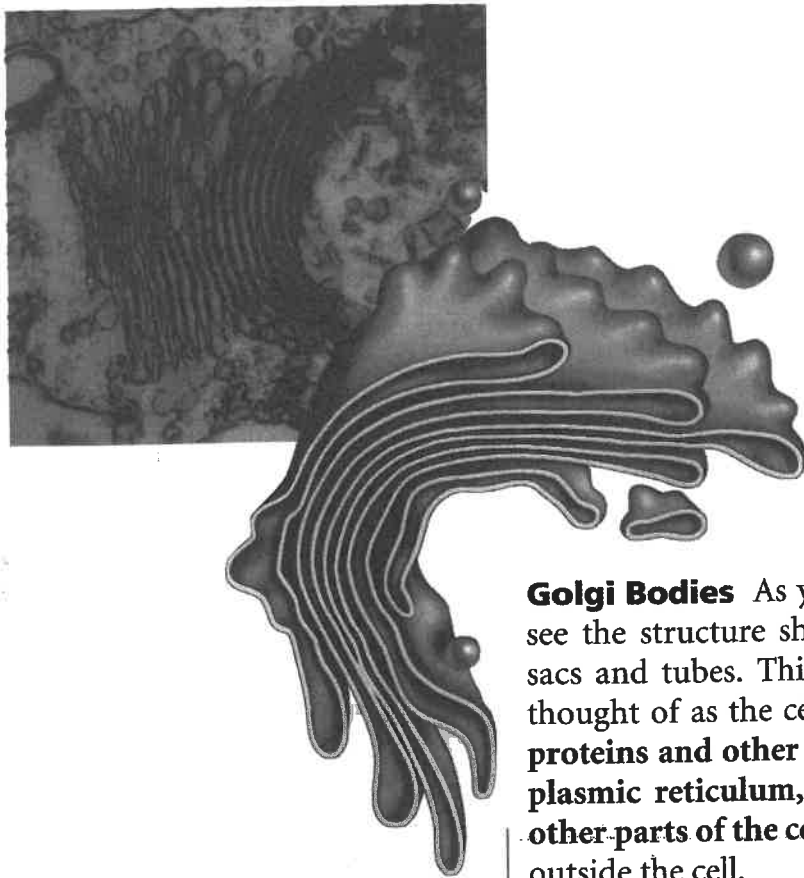
### Endoplasmic Reticulum

The endoplasmic reticulum is similar to the system of hallways in a building. Proteins and other materials move throughout the cell by way of the endoplasmic reticulum. The spots on this organelle are ribosomes, which produce proteins.



Ribosomes





**FIGURE 13**  
**A Golgi Body**  
 Golgi bodies are organelles that transport materials.

**Golgi Bodies** As you leave the endoplasmic reticulum, you see the structure shown in Figure 13. It looks like flattened sacs and tubes. This structure, called a **Golgi body**, can be thought of as the cell's mail room. **The Golgi bodies receive proteins and other newly formed materials from the endoplasmic reticulum, package them, and distribute them to other parts of the cell.** The Golgi bodies also release materials outside the cell.

**Chloroplasts** Have you noticed the many large green structures floating in the cytoplasm? Only the cells of plants and some other organisms have these green organelles called **chloroplasts**. **Chloroplasts capture energy from sunlight and use it to produce food for the cell.** Chloroplasts make leaves green.

**Vacuoles** Steer past the chloroplasts and head for that large, water-filled sac, called a **vacuole** (VAK yoo ohl), floating in the cytoplasm. **Vacuoles are the storage areas of cells.** Most plant cells have one large vacuole. Some animal cells do not have vacuoles; others do. Vacuoles store food and other materials needed by the cell. Vacuoles can also store waste products.


**Lysosomes** Your journey through the cell is almost over. Before you leave, take another look around you. If you carefully swing your ship around the vacuole, you may be lucky enough to see a **lysosome** (LY suh sohm). **Lysosomes are small, round structures containing chemicals that break down certain materials in the cell.** Some chemicals break down large food particles into smaller ones. Lysosomes also break down old cell parts and release the substances so they can be used again. In this sense, you can think of lysosomes as the cell's cleanup crew.

Lab  
zone

### Try This Activity

#### Comparing Cells

Observe the characteristics of plant and animal cells.

1.  Obtain a prepared slide of plant cells from your teacher. Examine these cells under the low-power and high-power lenses of a microscope.
2. Draw a picture of what you see.
3. Repeat Steps 1 and 2 with a prepared slide of animal cells.

**Observing** How are plant and animal cells alike? How are they different?



**Reading Checkpoint**

What organelle captures the energy of sunlight and uses it to make food for the cell?

## Specialized Cells

Plants and animals (including yourself) contain many cells. In a many-celled organism, the cells are often quite different from each other and are specialized to perform specific functions. Contrast, for example, the nerve cell and red blood cells in Figure 14. Nerve cells are specialized to transmit information from one part of your body to another, and red blood cells carry oxygen throughout your body.

In many-celled organisms, cells are often organized into tissues, organs, and organ systems. A tissue is a group of similar cells that work together to perform a specific function. For example, your brain is made mostly of nervous tissue, which consists of nerve cells. An organ, such as your brain, is made of different kinds of tissues that function together. In addition to nervous tissue, the brain contains other kinds of tissue that support and protect it. Your brain is part of your nervous system, which is an organ system that directs body activities and processes. An organ system is a group of organs that work together to perform a major function.



Reading  
Checkpoint

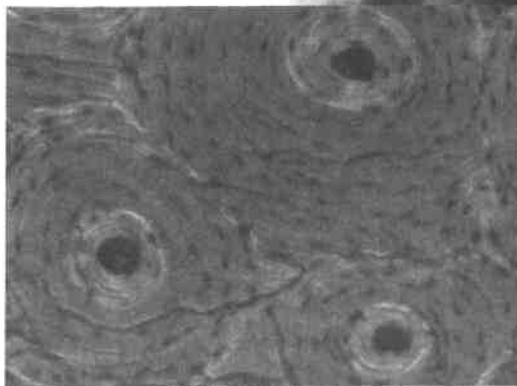
What is an organ system? Give an example.

### FIGURE 14 Specialized Cells

Nerve cells carry information throughout the human body. Red blood cells carry oxygen. Bone cells produce chemicals that strengthen bone.

**Comparing and Contrasting**  
*Compare the structures of these three types of cells.*

#### Bone cells ▼



Discovery  
CHANNEL  
SCHOOL

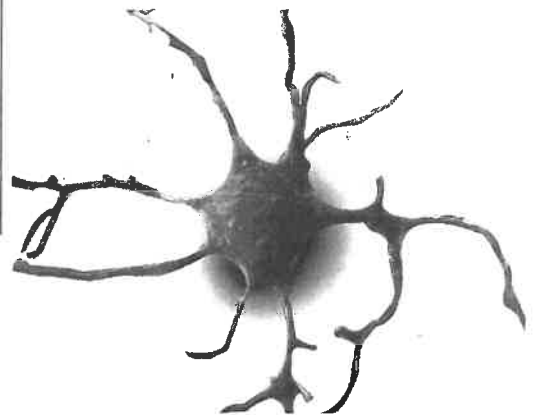
Cell Structure  
and Function

Video Preview

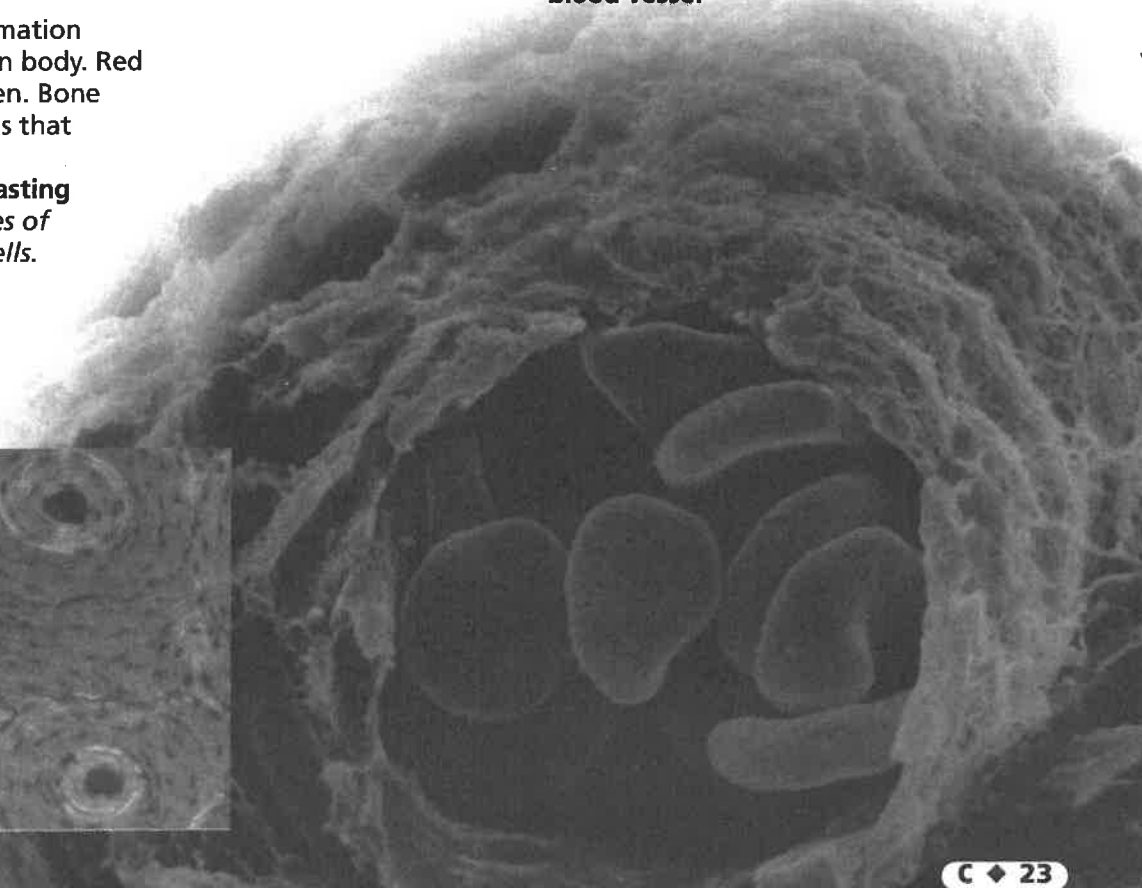
▶ Video Field Trip

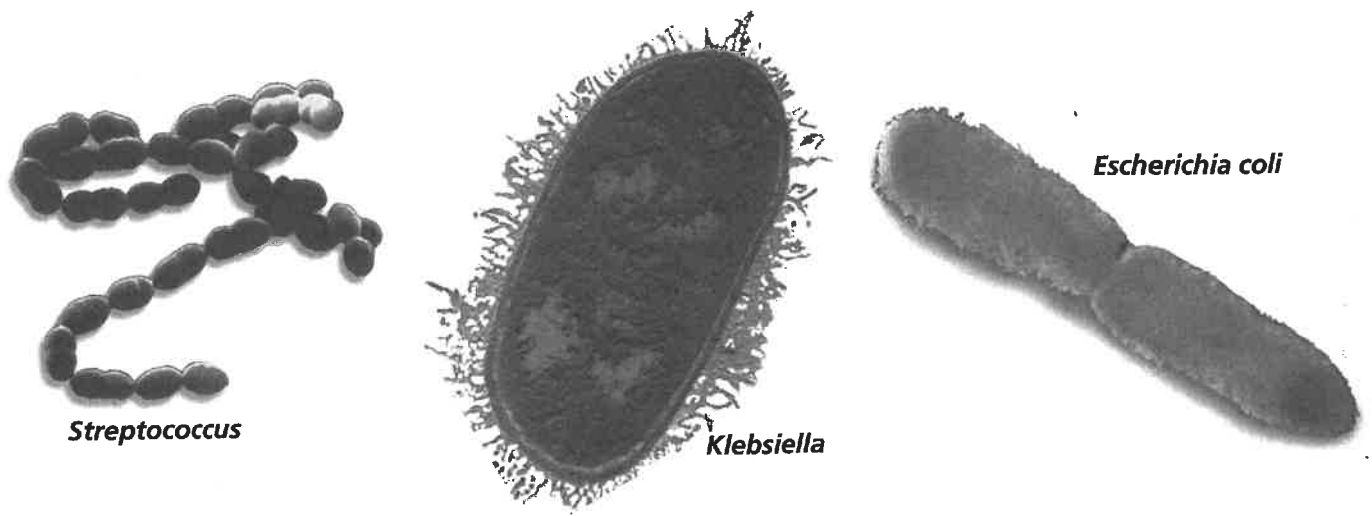
Video Assessment

#### Nerve cell ▼



#### Red blood cells in a ▼ blood vessel





**FIGURE 15**  
**Bacterial Cells**  
 Bacterial cells have no nuclei.

## Bacterial Cells

The plant and animal cells that you just learned about are very different from the bacterial cells you see in Figure 15. First, bacterial cells are usually much smaller than plant or animal cells. A human skin cell, for example, is about ten times as large as an average bacterial cell. **While a bacterial cell does have a cell wall and a cell membrane, it does not contain a nucleus. The bacterial cell's genetic material, which looks like a thick, tangled string, is found in the cytoplasm.** Bacterial cells contain ribosomes, but none of the other organelles found in plant or animal cells.

## Section 2 Assessment

**Target Reading Skill Previewing Visuals**  
 Refer to your questions and answers about Figure 12 to help you answer the questions below.

### Reviewing Key Concepts

1. **a. Comparing and Contrasting** Compare the functions of the cell wall and the cell membrane.
- b. Describing** What is a characteristic of cellulose?
- c. Inferring** How does cellulose help with the functions of the cell wall?
2. **a. Identifying** Identify the functions of ribosomes and Golgi bodies.
- b. Describing** Describe the characteristics of the endoplasmic reticulum.
- c. Applying Concepts** How are the functions of ribosomes, Golgi bodies, and the endoplasmic reticulum related to one another?
3. **a. Reviewing** What is a tissue? What is an organ?
- b. Explaining** What is the relationship among cells, tissues, and organs?
- c. Inferring** Would a tissue or an organ have more kinds of specialized cells? Explain.
4. **a. Reviewing** Where is the genetic material in a bacterial cell?
- b. Comparing and Contrasting** Contrast the location of genetic material in bacterial cells to its location in plant and animal cells.

### Writing in Science

**Writing a Description** Write a paragraph describing a typical animal cell. Your paragraph should include all the structures generally found in animal cells and a brief explanation of the functions of those structures.



Use text pages 16-24.

organelles -	Draw the shape of a plant cell.	Draw the shape of an animal cell.
cell wall -	cell membrane -	nucleus -
cytoplasm -	mitochondria -	endoplasmic reticulum -
ribosomes -	Golgi body -	chloroplasts -
vacuole -	lysosomes -	Cells, cells they're made of _____!