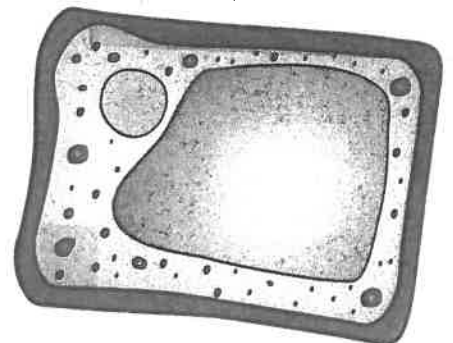
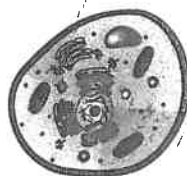
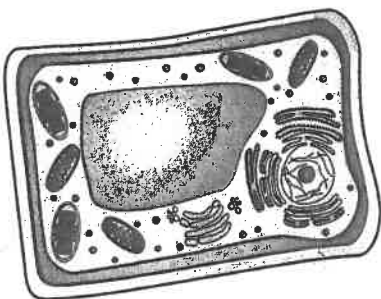


Name: _____ HR: _____

Plant or Animal Cell Summative Project

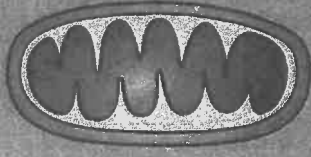
For this project, you will create a plant **OR** animal cell out of common household materials. On the back of this sheet is a checklist of the organelles that need to be included in the cell. Use your notes and cell diagrams in your binder as your main resource. If you look at cell models on the internet there will be more organelles than needed in the cell. You do not need to put those in your cell model. Here are the basic requirements for your project:

- Size no larger than 9 X 12
- You can use many types of materials including but not limited to: yarn, fun foam, buttons, beans, macaroni, mini marshmallows, markers, saran wrap, golf ball, etc... (Don't use gelatin, as it tends to break down too quickly and makes a mess.) **USE YOUR IMAGINATION!**
- Glue materials securely – Hot glue works much better.
- Make sure you have a title on your project – Plant Cell or Animal Cell
- Make sure you label each cell part listed on the back of this sheet.
- A written report must be completed that explains the name and function of each part of the cell. If you are doing the animal cell, you must explain why it doesn't have a cell wall and chloroplasts.



Cell Project Checklist

As you work on your project, check off the parts so you'll know that you did everything you needed to do.

Check off	Plant cell	Check off	Animal cell
	Cell membrane		Cell membrane
	Nucleus		Nucleus
	Ribosomes		Ribosomes
	Lysosomes		Lysosomes
	Golgi Bodies		Golgi Bodies
	Mitochondria		Mitochondria
	Endoplasmic Reticulum		Endoplasmic Reticulum
	Vacuoles		Vacuole
	Cytoplasm		Cytoplasm
	Chloroplasts		
	Cell Wall		

Cell Project Rubric

Parts of the Cell: 2 points each (one point for cell part and one point for label)

	nucleus		cytoplasm
	mitochondria		ribosomes
	endoplasmic reticulum		Golgi bodies
	cell membrane		Type of Cell (plant/animal)
	vacuole		chloroplasts (plant cell only)
	lysosomes		cell wall (plant cell only)

Spelling: (3 points total)

All words are spelled correctly in the title and labels 3

Most words are spelled correctly in the title and labels 2

Few words are spelled correctly in the title and labels 1

Quality of Project: Project is in 3-D Format (10 points total)

10 – Excellent creativity, best effort put forth! 9 – Above average creativity, effort put forth

8 – Average creativity, some effort put forth 5 – Below average, little effort put forth

0 – No 3-D objects, little effort put forth

Neatness: (4 points total)

Labels are clearly written. Color is used to enhance project 4

There are a few erasures, smudged lines, and stray marks 3

Color is not used to enhance the project 2

Effort: (8 points total)

Turned in on Time; Name (first and last) 5

Class Period is on Model 3

TOTAL POINTS FOR 3-D Animal Cell Model _____/45

TOTAL POINTS FOR 3-D Plant Cell Model _____/49

TURN OVER FOR MORE!

Written Report Turned in with Project:

All parts are listed and the function is clearly stated	11
Most parts are listed and the functions are stated, but not clear	8
Few parts are listed and the functions are not stated clearly	6

Animal Cell Only—describe why there are is no cell wall or chloroplasts 4

Spelling: (10 points total)

All words are spelled correctly	10
Most words are spelled correctly	7
Few words are spelled correctly	5

Effort: (10 points total)

Turned in on Time, Name (first and last), Class Period are on Written Report	10
---	----

TOTAL POINTS FOR Animal Cell Report _____/35 + 3-D Model_____/45

TOTAL POINTS FOR Plant Cell Report _____/31 + 3-D Model_____/49

FINAL GRADE ANIMAL CELL _____/80 points

FINAL GRADE PLANT CELL _____/80 points